

Mark Andy 800 Series

Positive Displacement Guide Retrofit

PDG-PS/800 Series

Part of the most advanced web guide system available today



Designed to fit all Mark Andy 810, 820, and 830 label presses

This economical drop-in system is designed to add a web guide or replace an existing one. The system includes a Micro 1000® digital controller, specially designed PointSource™ edge detector, and a compact AccuGuide™ PDG-PS positive displacement guide structure.

Tighter customer tolerances require precise web converting. AccuWeb's patented systems provide accurate, reliable web guidance.

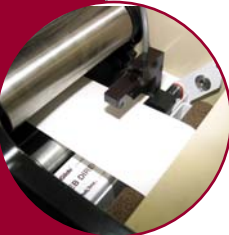
Benefits of the Mark Andy 800 series retrofit guide system:

- **Easy Installation** — Adding an AccuGuide system to your Mark Andy 800 series label press is simple and straightforward.
- **Dynamically Compensated** — Our exclusive technology automatically adjusts for all environmental, process and web edge changes - temperature, relative humidity, barometric pressure, dirt, dust, Oxi-Dry, nitrogen additions, web flutter, or passline variation.
- **Any Web Material** — Our edge detectors sense all web materials - paper, film, foil, nonwovens, mesh, metals, virtually any web - regardless of opacity level or density. Select either compensated ultrasonic or compensated infrared technology depending on materials.
- **Totally Automated — No Maintenance** — Edge detectors self-calibrate automatically. No operator adjustment necessary - resulting in faster make-ready.
- **Other Retrofits Available** — Retrofits available for all makes of presses including Mark Andy, Comco, Allied Gear, Propheteer, Aquaflex, Rotopress, Nilpeter, and others. Please contact AccuWeb for details.

Compatible with the Micro 1000 controller



Special edge detector allows for maximum web widths



Specifically designed for the Mark Andy 810, 820 and 830



Easily replaces existing web guide system



Manufactured in the United States
under Patents #5,834,877 and #5,274,573

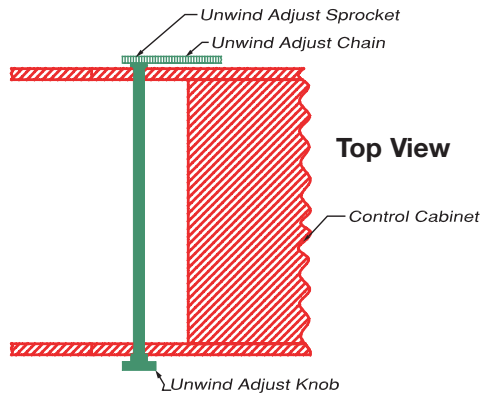


AccuWeb, Inc.
www.accuweb.com

Specify AccuWeb for your next equipment or replacement web guide - and experience the digital difference.

Mark Andy 800 series installation instructions

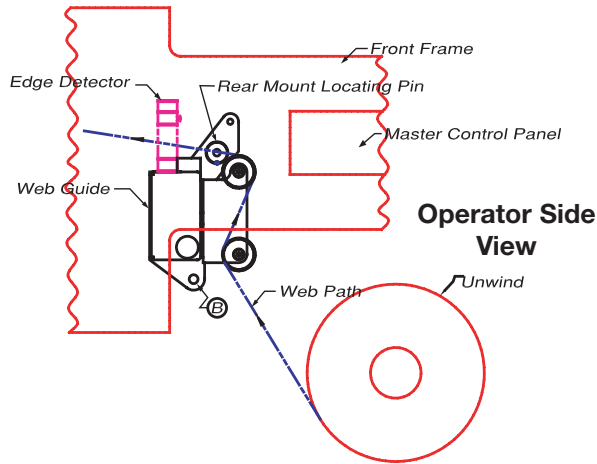
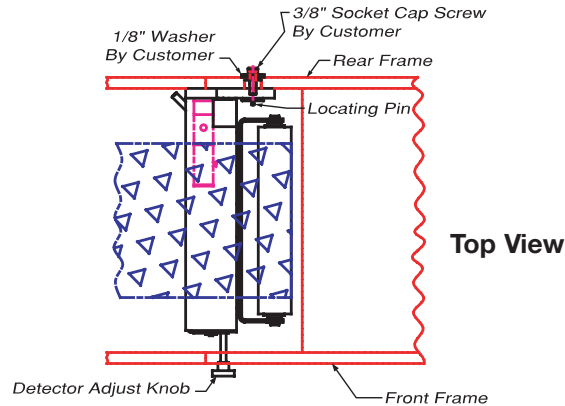
Existing Setup



Remove manual unwind adjust knob, shaft, sprocket, and chain.

Setup with AccuWeb Guide Setup

- 1) Install guide using a 3/4" hole in rear machine frame, locating pin, washer, and cap screw.
- 2) Orient guide vertically and tighten cap screw.
- 3) Drill and tap a 3/8-16 hole at **A** or thru hole if appropriate. Tighten screw.
- 4) Locate system controller in a convenient location.
- 5) Connect the edge detector and guide cables to the controller.
- 6) Refer to installation manual for setup and operation.



Guide Model Information

Mark Andy 810/820/830 7"

- Guide Model 8.50501

Mark Andy 830 10"

- Guide Model 11.50501



Toll free: (888) 422-2893 • Web site: www.accuweb.com

You'll always get more value from AccuWeb

- The compact PDG-PS/800 series is a cost effective path to improved Mark Andy performance.
- PWM (Pulsed Width Modulated) actuator motor drive for quick, accurate response.
- All systems include an actuator with automatic servo-center and end-of-travel internal limit switches.
- Systems come with Micro 1000 controller, edge detector, actuator, and guide assembly.
- A proprietary linear bearing system is used to reduce friction and wear, allowing for a faster, more accurate response.
- The unique bearing system is designed to position the pivot point exactly on the incoming plane to ensure guide accuracy.

World Headquarters

P.O. Box 7816
Madison, WI 53707 U.S.A.
Phone: (608) 223-0625
Fax: (608) 223-0074

European Sales and Support

Formanguieres 87
CH-1782 Belfaux/Switzerland
Phone: +41 26 475 5028
Fax: +41 26 475 5025