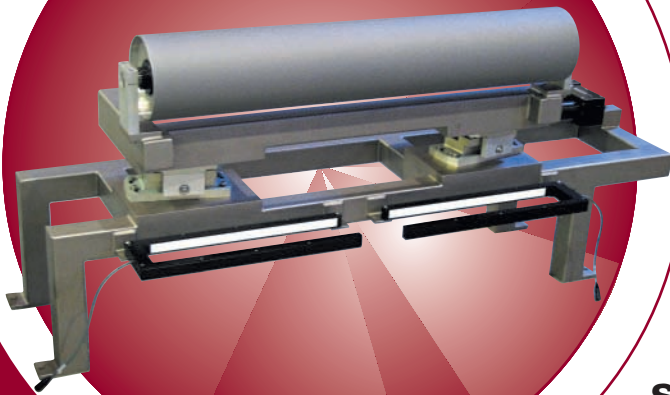


AccuGuide™

Steering Roll Assemblies

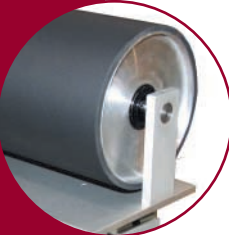
SR-AP, SR-FS Series



4604 SRSR-FS

A broad line of steering roll assemblies manufactured with anodized aluminum plate or structural steel tube to provide superior performance and reliability

A variety of roller sizes and roller options are available



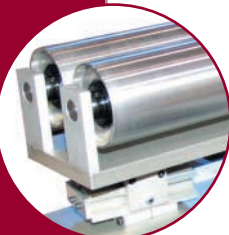
Designed for abrasive environments — optional bellows protect the bearings from grit, glue, or other contaminants



Unique cam follower linear bearing system allows theoretical pivot point adjustment



Available in double or single roll designs



AccuGuide Steering Roll assemblies are manufactured in two construction methods. Structural steel tube (SR-FS Series) is used for wide web or high tension applications and anodized aluminum plate (SR-AP Series) is used for mid to narrow webs. Both designs incorporate a proprietary linear bearing system mounted to an integral frame that provides for simple tram and level mounting. This eases installation and eliminates alignment problems. This unique linear bearing system allows the guide assembly to be installed in vertical, horizontal, or inverted positions for optimum application flexibility.

Like Every AccuWeb® Guide Component, the AccuGuide SR-AP and SR-FS Series are Built to Last.

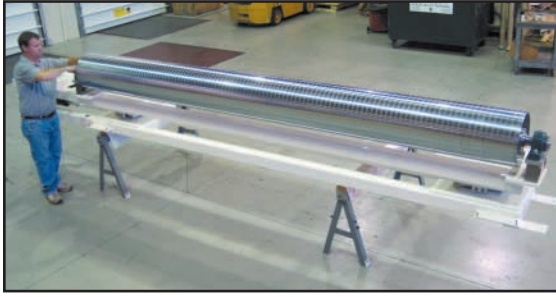
- **Heavy-Duty FS Series Structural Steel Tube** — Provides exceptional strength and design flexibility for wider web or higher tension applications.
- **Low-Inertia AP Series Aluminum Plate Designs** — High strength-to-weight ratio allows fast frequency response in mid to narrow web configurations.
- **Proprietary Linear Bearing System** — Cam follower bearings run in a hardened track, providing line contact for reduced friction and wear, resulting in a faster response.
- **Standard Sizes and Custom Assemblies** — If a stock drop-in unit doesn't match your needs, a custom AccuGuide SR-AP or SR-FS can be designed for your specific applications.
- **Easy Wipe Down** — AP Series have smooth, flat surfaces that are simple to maintain in clean room environments. Optional smooth, ground and polished welds are available on the FS Series, providing smooth, burr-free surfaces required for strict clean room applications.
- **Free-turning Idler Rollers** — Free-running bearings minimize rotational torques — ideal for running light webs. Dynamically balanced rolls ensure vibration-free performance. Choose from live shaft or dead shaft options.

Manufactured in the United States
under one or more patents and trademarks.



AccuWeb, Inc.
www.accuweb.com

Custom Applications



This example of a custom steering roll assembly was designed for a fine paper application using a single roll (SR) balanced for 3000 fpm.

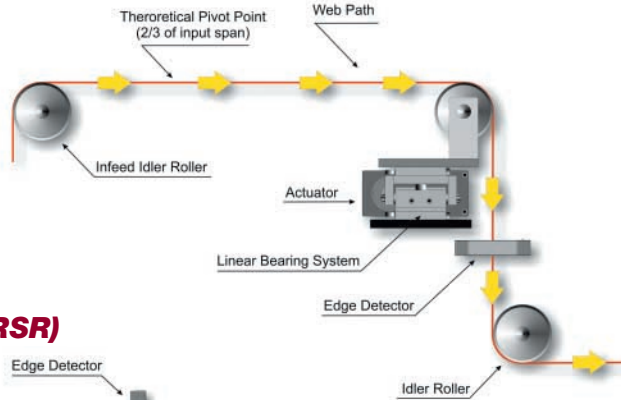
Custom designs are available for any application. Call us with your challenge!



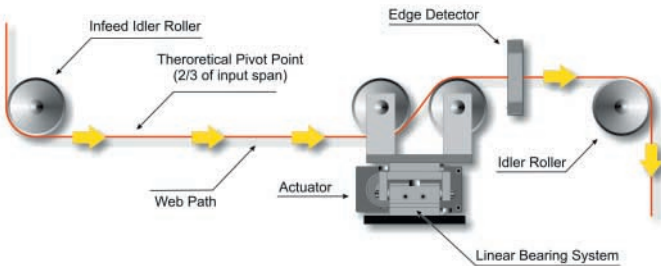
This example of a custom AccuGuide pedestal module uses a combination of FS and AP steering roll assemblies to simultaneously guide four layers of material.

The moving frame pivots around an adjustable, theoretical pivot point on the incoming web span to maintain the desired web position. Linear bearing assemblies are factory set for each application.

Single Roll Steering (SRSR)



Double Roll Steering (DRSR)



FS Frame Options

- Electrolys Nickel
- Stainless Steel
- Smooth Welds
- Pedestal
- Walkways
- Custom Paint Colors

Roller Options

- Plasma Coated
- Rubber Covered
- Hard-coat Anodized
- Cork Covered
- Micro-grooved
- Teflon®

Model Nomenclature

Example: Model 5604 SR-FS

56 04

└─ Total correction (inches)
└─ Roll face (inches)



Toll free: (888) 422-2893 • Web site: www.accuweb.com

An AccuWeb System is a Sound Investment

- **Tangible Benefits —**
While web guides represent a nominal expense within an entire converting line, they can have considerable impact on product quality, process waste, operating speeds, efficiency and maintenance costs. Choosing a web guide system that delivers optimum trouble-free performance is a wise investment.
- **The Support of Web Guide Experts —** The AccuWeb application engineering team helps you determine the best guide design and location to fit your specific converting operation. By evaluating your web widths, materials and change-over frequencies, as well as operating environment, AccuWeb helps ensure greater harmony between our innovative guide components and your web converting process for an optimum return on your investment.